

## Top Tap Register Box

### Description

Sterling Best Sealed® Register Boxes are designed to provide reliable and efficient air distribution in residential and light commercial HVAC systems.

### Features

Robust 30 Gauge Galvanized Steel Box Construction  
 Fiberglass Free, pre-insulated, and sealed.

Rigid Polyurethane foam flows into seams creating airtight seal.

Building code approval in R6 and R8 configurations.  
 Patented box design has pre-punched nail holes on inner flange for easy install.

### Standard Construction

With or without damper blade in locating collar.

### Optional Construction

Gasket application on sheetrock flange.

Boxed for shipping and handling.

Flanged or Exterior boot clip for easy installation.



LENGTH (L)	WIDTH (W)	COLLAR DIAMETERS AVAILABLE							
		4 in	5in	6in	7in	8in	9in	10in	
8in	4in	x	x						
10in	6in	x	x	x					
10in	8in	x	x	x	x	x	x		
10in	10in	x	x	x	x	x	x		
12in	6in	x	x	x	x				
14in	8in	x	x	x	x	x	x		
12in	12in	x	x	x	x	x	x	x	
14in	8in	x	x	x	x	x	x		

## Product Specifications

Common Sizes	Item Description	Insulation	Gauge	Pallet Quantity
SBS844TT	8x4x4 Top Tap Register Boot	R6/R8	30 Gauge	320
SBS845TT	8x4x5 Top Tap Register Boot	R6/R8	30 Gauge	224
SBS1086TT	10x8x6 Top Tap Register Boot	R6/R8	30 Gauge	180
SBS1087TT	10x8x7 Top Tap Register Boot	R6/R8	30 Gauge	180
SBS1088TT	10x8x8 Top Tap Register Boot	R6/R8	30 Gauge	180
SBS1267TT	12x6x7 Top Tap Register Boot	R6/R8	30 Gauge	120
SBS1489TT	14x8x9 Top Tap Register Boot	R6/R8	30 Gauge	108
SBS12129TT	12x12x9 Top Tap Register Boot	R6/R8	30 Gauge	150

Contact [orders@sterlingcustomsheetmetal.com](mailto:orders@sterlingcustomsheetmetal.com) for additional information.  
 Custom sizes are available upon request.

## Top Tap Register Box with Exterior Clip

### Description

Sterling Best Sealed® Register Boxes are designed to provide reliable and efficient air distribution in residential and light commercial HVAC systems.

### Features

Robust 30 Gauge Galvanized Steel Box Construction  
 Fiberglass Free, pre-insulated, and sealed.

Rigid Polyurethane foam flows into seams creating airtight seal.

Building code approval in R6 and R8 configurations.  
 Patented box design has pre-punched nail holes on inner flange for easy install.

### Standard Construction

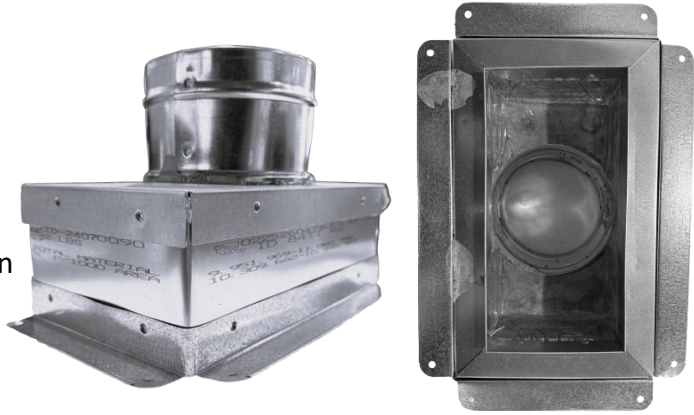
With or without damper blade in locating collar.

### Optional Construction

Gasket application on sheetrock flange.

Boxed for shipping and handling.

Flanged or Exterior boot clip for easy installation.



LENGTH (L)	WIDTH (W)	COLLAR DIAMETERS AVAILABLE						
		4 in	5in	6in	7in	8in	9in	10in
8in	4in	x	x					
10in	6in	x	x	x				
10in	8in	x	x	x	x	x	x	
10in	10in	x	x	x	x	x	x	
12in	6in	x	x	x	x			
14in	8in	x	x	x	x	x	x	
12in	12in	x	x	x	x	x	x	x
14in	8in	x	x	x	x	x	x	

### Product Specifications

Common Sizes	Item Description	Insulation	Gauge	Pallet Quantity
SBSCL844TT	8x4x4 Top Tap Register Boot w/ Exterior Clip	R6/R8	30 Gauge	320
SBSCL845TT	8x4x5 Top Tap Register Boot w/ Exterior Clip	R6/R8	30 Gauge	224
SBSCL1086TT	10x8x6 Top Tap Register Boot w/ Exterior Clip	R6/R8	30 Gauge	180
SBSL1087TT	10x8x7 Top Tap Register Boot w/ Exterior Clip	R6/R8	30 Gauge	180
SBSCL1088TT	10x8x8 Top Tap Register Boot w/ Exterior Clip	R6/R8	30 Gauge	180
SBSCL1267TT	12x6x7 Top Tap Register Boot w/ Exterior Clip	R6/R8	30 Gauge	120
SBSCL1489TT	14x8x9 Top Tap Register Boot w/ Exterior Clip	R6/R8	30 Gauge	108
SBSCL12129TT	12x12x9 Top Tap Register Boot w/ Exterior Clip	R6/R8	30 Gauge	150

Contact [orders@sterlingcustomsheetmetal.com](mailto:orders@sterlingcustomsheetmetal.com) for additional information.  
 Custom sizes are available upon request.

## Top Tap Register Box with Flanged Clip

### Description

Sterling Best Sealed® Register Boxes are designed to provide reliable and efficient air distribution in residential and light commercial HVAC systems.

### Features

Robust 30 Gauge Galvanized Steel Box Construction  
 Fiberglass Free, pre-insulated, and sealed.

Rigid Polyurethane foam flows into seams creating airtight seal.

Building code approval in R6 and R8 configurations.  
 Patented box design has pre-punched nail holes on inner flange for easy install.

### Standard Construction

With or without damper blade in locating collar.

### Optional Construction

Gasket application on sheetrock flange.

Boxed for shipping and handling.

Flanged or Exterior boot clip for easy installation.



LENGTH (L)	WIDTH (W)	COLLAR DIAMETERS AVAILABLE						
		4 in	5in	6in	7in	8in	9in	10in
8in	4in	x	x					
10in	6in	x	x	x				
10in	8in	x	x	x	x	x	x	
10in	10in	x	x	x	x	x	x	
12in	6in	x	x	x	x			
14in	8in	x	x	x	x	x	x	
12in	12in	x	x	x	x	x	x	x
14in	8in	x	x	x	x	x	x	

### Product Specifications

Common Sizes	Item Description	Insulation	Gauge	Pallet Quantity
SBSCL844TT FL	8x4x4 Top Tap Register Boot w/ Flange Clip	R6/R8	30 Gauge	320
SBSCL845TT FL	8x4x5 Top Tap Register Boot w/ Flange Clip	R6/R8	30 Gauge	224
SBSCL1086TT FL	10x8x6 Top Tap Register Boot w/ Flange Clip	R6/R8	30 Gauge	180
SBSL1087TT FL	10x8x7 Top Tap Register Boot w/ Flange Clip	R6/R8	30 Gauge	180
SBSCL1088TT FL	10x8x8 Top Tap Register Boot w/ Flange Clip	R6/R8	30 Gauge	180
SBSCL1267TT FL	12x6x7 Top Tap Register Boot w/ Flange Clip	R6/R8	30 Gauge	120
SBSCL1489TT FL	14x8x9 Top Tap Register Boot w/ Flange Clip	R6/R8	30 Gauge	108
SBSCL12129TT FL	12x12x9 Top Tap Register Boot w/ Flange Clip	R6/R8	30 Gauge	150

Contact [orders@sterlingcustomsheetmetal.com](mailto:orders@sterlingcustomsheetmetal.com) for additional information.  
 Custom sizes are available upon request.

## Flat Top Register Box

### Description

Sterling Best Sealed® Flat-Top register boxes are constructed with rigid polyurethane foam offer a high-performance alternative to traditional duct board register boxes. Designed for efficiency and durability, these boxes feature a solid foam core that provides excellent insulation while maintaining structural integrity over time.

### Features

Robust 30 Gauge Galvanized Steel Box Construction  
 Fiberglass Free, pre-insulated, and sealed.  
 Rigid Polyurethane foam flows into seams creating airtight seal.  
 Building code approval in R6 and R8 configurations.  
 Patented box design has pre-punched nail holes on inner flange for easy install.

### Standard Construction

Flat foam top allows easy installation of starter collar for duct assembly.

### Optional Construction

Gasket on sheetrock flange.  
 Flange or Exterior Clip for boot rail assembly.

### Product Specifications



Common Sizes	Item Description	Insulation	Gauge	Pallet QTY
SBS66FT	6X6 Flat Top - R6	R6	30 Gauge	300
SBS84FT	8X4 Flat Top - R6	R6	30 Gauge	320
SBS86FT	8X6 Flat Top - R6	R6	30 Gauge	240
SBS106FT	10X6 Flat Top - R6	R6	30 Gauge	180
SBS108FT	10X8 Flat Top - R6	R6	30 Gauge	180
SBS1010FT	10X10 Flat Top - R6	R6	30 Gauge	180
SBS126FT	12X6 Flat Top - R6	R6	30 Gauge	150
SBS128FT	12X8 Flat Top - R6	R6	30 Gauge	150
SBS1212FT	12X12 Flat Top - R6	R6	30 Gauge	150
SBS146FT	14X6 Flat Top - R6	R6	30 Gauge	150
SBS148FT	14X8 Flat Top - R6	R6	30 Gauge	150

Contact [orders@sterlingcustomsheetmetal.com](mailto:orders@sterlingcustomsheetmetal.com) for additional information.  
 Custom sizes are available upon request.

## Underfloor Box

### Description

Sterling Best Sealed® Underfloor boxes are designed to provide reliable and efficient air distribution in residential and light commercial HVAC systems.

### Features

Robust 30 Gauge Galvanized Steel Box Construction  
 Fiberglass Free, pre-insulated, and sealed.  
 Rigid Polyurethane foam flows into seams creating airtight seal.  
 Building code approval in R6 and R8 configurations.  
 Patented box design has pre-punched nail holes on inner flange for easy install.

### Standard Construction

Sterling collar taps into underfloor for duct assembly, instructional video on Website: Products

### Optional Construction

Locating collar preassembled for 90-degree duct assembly. Please see Sterling Best Sealed Short side/Wide side product data sheet for more information.



LENGTH (L)	WIDTH (W)	COLLAR DIAMETERS AVAILABLE						
		4 in	5in	6in	7in	8in	9in	10in
8in	4in	x	x					
10in	6in	x	x	x				
10in	8in	x	x	x	x	x	x	
10in	10in	x	x	x	x	x	x	
12in	6in	x	x	x	x			
14in	8in	x	x	x	x	x	x	
12in	12in	x	x	x	x	x	x	x
14in	8in	x	x	x	x	x	x	

### Product Specifications

Common Sizes	Item Description	Insulation	Gauge	Pallet Quantity
SBS84UF	8x4 Underfloor Box	R6/R8	30 Gauge	144
SBS106UF	10x6 Underfloor Box	R6/R8	30 Gauge	120
SBS108UF	10x8 Underfloor Box	R6/R8	30 Gauge	96
SBS126UF	12x6 Underfloor Box	R6/R8	30 Gauge	72
SBS1212UF	12x12 Underfloor Box	R6/R8	30 Gauge	54
SBS148UF	14x8 Underfloor Box	R6/R8	30 Gauge	72
SBS UF 4" Collar	4" Collar for Underfloor Box	N/A	30 Gauge	100
SBS UF 5" Collar	5" Collar for Underfloor Box	N/A	30 Gauge	100
SBS UF 6" Collar	6" Collar for Underfloor Box	N/A	30 Gauge	60
SBS UF 7" Collar	7" Collar for Underfloor Box	N/A	30 Gauge	50
SBS UF 8" Collar	8" Collar for Underfloor Box	N/A	30 Gauge	40
SBS UF 9" Collar	9" Collar for Underfloor Box	N/A	30 Gauge	30
SBS UF 10" Collar	10" Collar for Underfloor Box	N/A	30 Gauge	25

Contact [orders@sterlingcustomsheetmetal.com](mailto:orders@sterlingcustomsheetmetal.com) for additional information.  
 Custom sizes are available upon request.

## Short Side and Wide Side Box

### Description

Sterling Best Sealed® Short Side Wide Side boxes are designed to provide reliable and efficient air distribution in residential and light commercial HVAC systems.

### Features

Robust 30 Gauge Galvanized Steel Box Construction  
 Fiberglass Free, pre-insulated, and sealed.  
 Rigid Polyurethane foam flows into seams creating airtight seal.  
 Building code approval in R6 and R8 configurations.  
 Patented box design has pre-punched nail holes on inner flange for easy install.

### Standard Construction

Locating collar preassembled for 90-degree duct assembly.  
 With or without damper blade in locating collar.

### Optional Construction

Locating collar preassembled to wide side or short side.



LENGTH (L)	WIDTH (W)	COLLAR DIAMETERS AVAILABLE					
		4 IN	5 IN	6 IN	7 IN	8 IN	9 IN
8 IN	4 IN	X	X				
10 IN	6 IN	X	X	X			
10 IN	8 IN	X	X	X	X	X	
12 IN	12 IN	X	X	X	X	X	X
14 IN	8 IN	X	X	X	X	X	X

### Product Specifications

Common Sizes	Item Description	Insulation	Gauge	Pallet Quantity
SBS 845SS	8x4x5 Short Side	R6	30 Gauge	120
SBS 1067SS	10x6x7 Short Side	R6	30 Gauge	60
SBS 1088SS	10x8x8 Short Side	R6	30 Gauge	60
SBS 12129SS	12x12x9 Short Side	R6	30 Gauge	54
SBS 1489SS	14x8x9 Short Side	R6	30 Gauge	60
SBS 845WS	8x4x5 Wide Side	R6	30 Gauge	120
SBS 1067WS	10x6x7 Wide Side	R6	30 Gauge	60
SBS 1088WS	10x8x8 Wide Side	R6	30 Gauge	60
SBS 12129WS	12x12x9 Wide Side	R6	30 Gauge	54
SBS 1489WS	14x8x9 Wide Side	R6	30 Gauge	60

Contact [orders@sterlingcustomsheetmetal.com](mailto:orders@sterlingcustomsheetmetal.com) for additional information.  
 Custom sizes are available upon request.

## Metal Plenums

### Description

Sterling Custom Sheet Metal manufacturers return, and supply plenums built to your specifications. Custom sizes available upon request.

### Features

Insulated to R6, R8, and uninsulated.  
 Individually banded and palletized according to size.  
 Manufactured in 26 Gauge Galvanized steel.  
 Easy snap lock assembly design.

### Standard Construction

Flanged to ½", 1", or without flange.  
 3-Piece or 4-Piece Knuckle plenum design.

### Optional Construction

Full coverage boxed  
 Two end caps per kit  
 Triangles, transitions, spacers



### Product Specifications

Common Sizes	Item Description	Insulation	Gauge	Pallet Quantity
MP162524	16x25x24 Metal Plenum	R6 or R8	26	20
MP202524	20x25x24 Metal Plenum	R6 or R8	26	20
MP162036	16x20x36 Metal Plenum	R6 or R8	26	10
MP162536	16x25x36 Metal Plenum	R6 or R8	26	10
MP202036	20x20x36 Metal Plenum	R6 or R8	26	10
MP202536	20x25x36 Metal Plenum	R6 or R8	26	10
MP162048	16x20x48 Metal Plenum	R6 or R8	26	10
MP202048	20x20x48 Metal Plenum	R6 or R8	26	10

Contact [orders@sterlingcustomsheetmetal.com](mailto:orders@sterlingcustomsheetmetal.com) for additional information.  
 Custom sizes are available upon request.

## Wyes

### Description

Sterling Custom Sheet Metal manufactures Wyes, Tees, and Reducers to split and transition while maintaining efficient air movement.

### Features

- Sealed with HVAC sealant
- Manufactured in 30 Gauge
- Formed and assembled to maintain dimensional accuracy and minimize air leakage.

### Standard Construction

- Beaded and Crimped for easy duct assembly
- Boxed for shipping and handling
- Individually labeled with size and specs.



### Product Specifications

Common Sizes	Item Description	Insulation	Gauge	Box Quantity
W544	5x4x4 Wye Sealed	N/A	30 Gauge	30
W644	6x4x4 Wye Sealed	N/A	30 Gauge	30
W654	6x5x4 Wye Sealed	N/A	30 Gauge	20
W764	7x6x4 Wye Sealed	N/A	30 Gauge	20
W765	7x6x5 Wye Sealed	N/A	30 Gauge	15
W866	8x6x6 Wye Sealed	N/A	30 Gauge	12
W874	8x7x4 Wye Sealed	N/A	30 Gauge	18
W875	8x7x5 Wye Sealed	N/A	30 Gauge	15
W985	9x8x5 Wye Sealed	N/A	30 Gauge	10
W986	9x8x6 Wye Sealed	N/A	30 Gauge	10
W977	9x7x7 Wye Sealed	N/A	30 Gauge	10
W1087	10x8x7 Wye Sealed	N/A	30 Gauge	8
W1088	10x8x8 Wye Sealed	N/A	30 Gauge	6

Contact [orders@sterlingcustomsheetmetal.com](mailto:orders@sterlingcustomsheetmetal.com) for additional information.  
 Custom sizes are available upon request.

## Drain Pans

### Description

Sterling Custom Sheet Metal drain pans are designed to collect and drain condensation from air handlers, evaporator coils, and auxiliary systems.

**\*\*Laser Welded Corners coming soon!\*\***

### Features

Manufactured from 24 Gauge galvanized steel.

¾" NPT Galvanized drain connection.

Welded corners coated with rust proof paint.

### Standard Construction

Manufacturer installed welded drain connection on long side or short side.

### Optional Construction

PVC Drain connection.

22 Gauge Galvanized.

26 Gauge Galvanized.

Secondary Drain connections.



## Product Specifications

Common Sizes	Item Description	Insulation	Gauge	Pallet Quantity
DP3030	30x30 Drain Pan	N/A	24 Gauge	25
DP3060	30x60 Drain Pan	N/A	24 Gauge	20
DP3232	32x32 Drain Pan	N/A	24 Gauge	25
DP3236	32x36 Drain Pan	N/A	24 Gauge	25
DP3260	32x60 Drain Pan	N/A	24 Gauge	20
DP3672	36x72 Drain Pan	N/A	24 Gauge	15

Contact [orders@sterlingcustomsheetmetal.com](mailto:orders@sterlingcustomsheetmetal.com) for additional information.  
 Custom sizes are available upon request.

## Heater Stands

### Description

Sterling Custom Sheet Metal heater stands are designed to provide a reliable and durable platform for the installation of gas and electric furnaces. Built for strength and stability, these stands elevate furnaces above floors or joists.

### Features

Heavy-duty design provides dependable support for gas and electric furnaces.

Elevated platform keeps furnaces raised above flooring or joists.

Integrated flange allows the stand to be securely fastened to floors or framing members.

### Standard Construction

Available in 24", and 30" lengths to accommodate a wide range of furnace sizes.

Open frame design.

### Optional Construction

Optional full-length base connects stand legs together to increase rigidity and prevent sagging



NORMAL SIZES
12 X 30
6 X 20
6 X 24
6 X 28
6 X 30
7 X 30
9.5 X 28

SPECIALTY SIZES
HORIZONTAL
20 X 30
TALL
24 X 30
VERTICAL
8 X 24

## Product Specifications

Common Sizes	Item Description	Insulation	Gauge	Pallet Quantity
HS624	6x24 Heater Stands	N/A	22 Gauge	300
HS628	6x28 Heater Stands	N/A	22 Gauge	300
HS630	6x30 Heater Stands	N/A	22 Gauge	300
HS930	9x30 Heater Stands	N/A	22 Gauge	200
HS1230	12x30 Heater Stands	N/A	22 Gauge	150
HS624	6x24 Heater Stands	N/A	22 Gauge	300
HS628	6x28 Heater Stands	N/A	22 Gauge	300
HS630	6x30 Heater Stands	N/A	22 Gauge	300

Contact [orders@sterlingcustomsheetmetal.com](mailto:orders@sterlingcustomsheetmetal.com) for additional information.  
 Custom sizes are available upon request.

## Boot Rails

### Description

Sterling Custom Sheet Metal Boot Rails are designed to provide a secure, efficient mounting solution for register boxes, serving as the perfect complement to Sterling Best Sealed register boxes with clips. Engineered for durability and ease of installation, these rails ensure proper alignment and support of the register box during installation.

### Features

Compatible with a variety of box sizes and configurations.  
 Durable design for long-lasting performance, features a full-length opened hem on the bottom of rail for support.

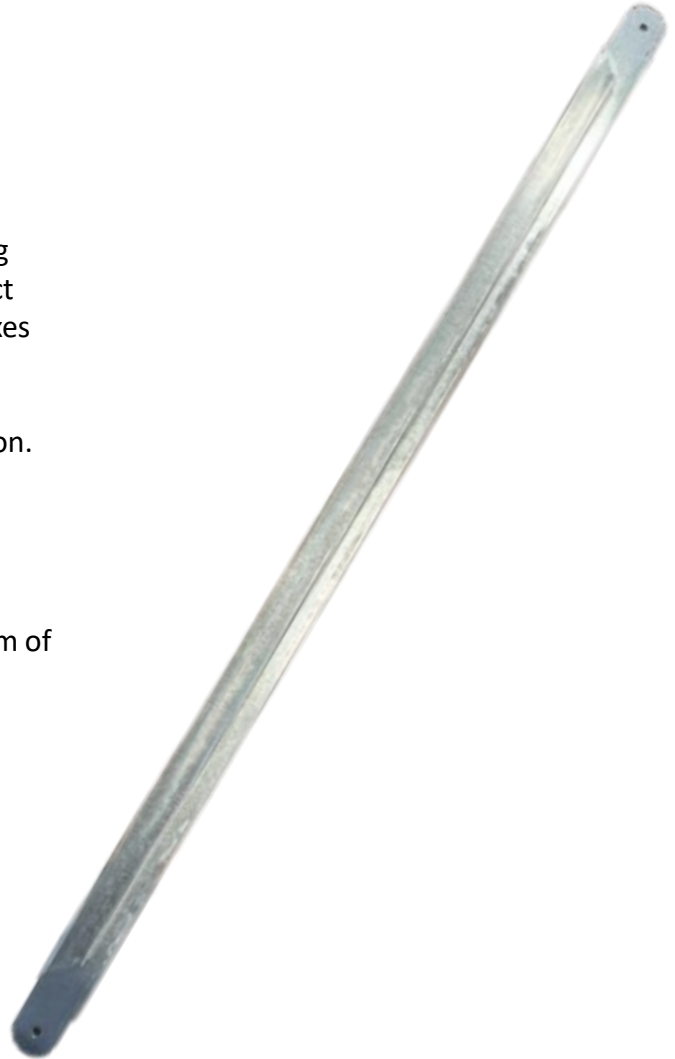
### Standard Construction

25" length.  
 30-gauge galvanized steel.  
 Pre punched holes for fasteners.

### Optional Construction

Custom lengths available.  
 26- gauge galvanized steel.

### Product Specifications



Common Sizes	Item Description	Insulation	Gauge	Pallet Quantity
BRP30	Boot Rail 25" 30 ga. 6000 Pallet Quantity Only	N/A	30 Gauge	6000
BR30	Boot Rail 25" 30 ga.	N/A	30 Gauge	6000
BRP26	Boot Rail 25" 26 ga. 6000 Pallet Quantity Only	N/A	26 Gauge	6000
BR26	Boot Rail 25" 26 ga.	N/A	26 Gauge	6000

Contact [orders@sterlingcustomsheetmetal.com](mailto:orders@sterlingcustomsheetmetal.com) for additional information.  
 Custom sizes are available upon request.